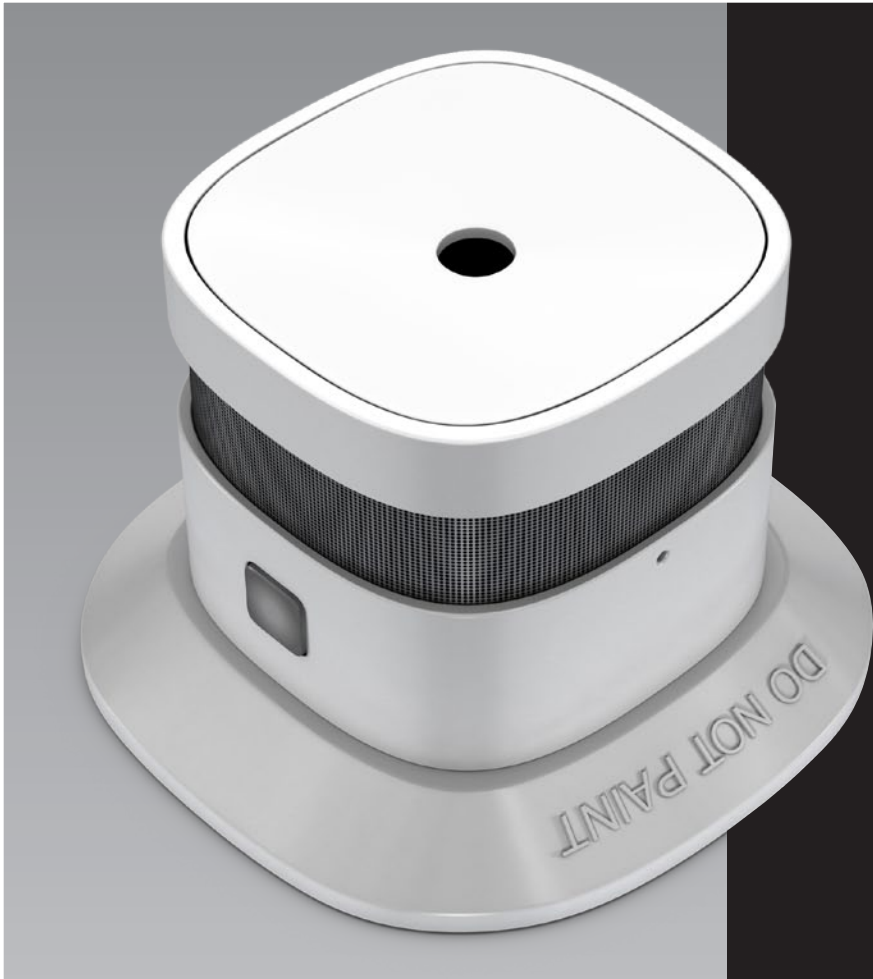


# VEMMIO



**smoke sensor**



SMOKE SENSOR



## smoke sensor

Smoke Sensor is a smart photoelectric smoke detector with ultra-low power wireless Z-Wave network technology design. It is a warning device that detects presence of smoke and smoke particles in real-time faster than any ionizing smoke alarms. Once the smoke is detected, the 85dB siren goes off and after the system has been configured, e-mails, sms or push notifications are sent to the users. Standardised, future-proof Z-Wave® wireless technology guarantees reliable operation of your Smoke Sensor over the long term. The sensor works with any Z-Wave-certified gateway.

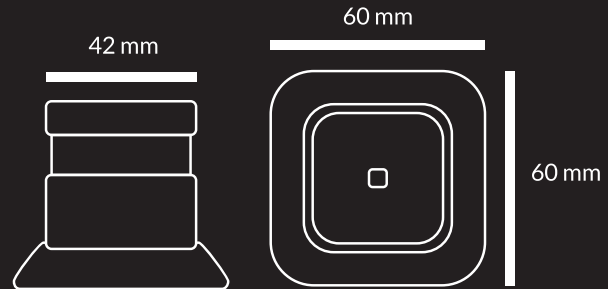
## key features

- Sensitive photoelectric smoke sensor to notify you about
- Built-in siren 85 dB
- Very fast smoke detection
- Low-battery use
- Smart and stylish design
- Maintenance free





Wireless standard	Z-Wave Plus
Frequency	868.40 MHz
Network range	70 m line of sight
Operating temperature	-10°C ~ 50°C
Sound alarm	85 dB
Battery	123A 3V
Battery: run time	1 year, low power indication



# VEMMIO

[www.vemmio.com](http://www.vemmio.com)  
certified z-wave manufacturer

